



ALL JAPAN 2018-19 TOURS



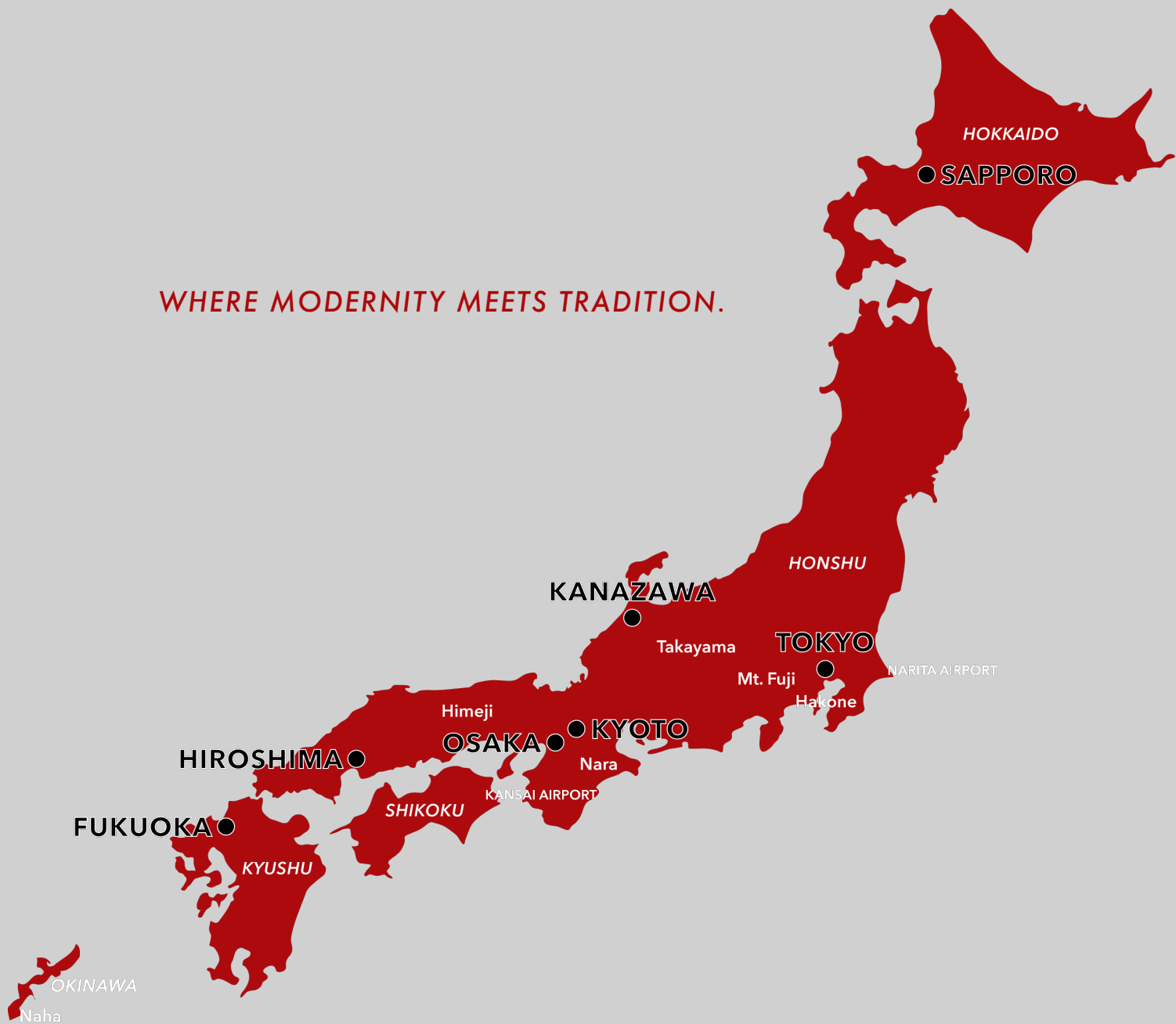
WELCOME TO JAPAN

A LAND OF COLOURFUL HISTORY, CULTURAL CONTRASTS AND
THE RISING SUN.

WHO ARE 'ALL JAPAN TOURS'?

All Japan Tours is a Japan travel specialist based in Sydney, Australia. With a strong background and expertise in all aspects of travel from airline ticketing and hotels to outbound travel and specialty tour design, our goal is to provide tours to suit travellers with all sorts of interests.

Join one of our fully escorted tours, design your own tour, or even let us design one especially for you. We look forward to making your dream holiday in Japan a reality!



WHERE MODERNITY MEETS TRADITION.

QUICK FACTS

Language

The official national language is Japanese, however English is widely spoken and displayed at train stations and airports in major cities. If you run into any issues, the Japanese are always happy to help!

Peak Travel Season

Visitors to Japan should be aware of the peak times of year for booking travel and accommodation. New Years, Golden Week (early May), Cherry Blossom season (March - April) and Obon (mid August).

Average Temperature (°C)

	Spring Mar - May	Summer Jun - Sep	Autumn Sep - Nov	Winter Dec - Feb
Tokyo	8 - 19	22 - 26	14 - 24	5 - 9
Kyoto	7 - 20	22 - 28	14 - 25	3 - 8
Sapporo	0 - 12	17 - 22	4 - 17	-1 - -5
Okinawa	18 - 23	26 - 28	21 - 27	16 - 18

Public Holidays & National Holidays 2018/19

2018

1 Jan	New Year's Holiday
8 Jan	Coming-of-Age Day
12 Feb	National Foundation Day
21 Mar	Vernal Equinox Day
30 Apr	Showa Day
3 May	Greenery Day
4 May	Constitution Memorial Day
5 May	Children's Day
16 Jul	Maritime Day
11 Aug	Mountain Day
17 Sep	Respect for the Aged Day
24 Sep	Autumnal Equinox Day
8 Oct	Health and Sports Day
3 Nov	Culture Day
23 Nov	Labour Thanksgiving Day
24 Nov	The Emperor's Birthday

2019

1 Jan	
14 Jan	
11 Feb	
21 Mar	
29 Apr	
3 May	
4 May	
6 May	
15 Jul	
12 Aug	
16 Sep	
23 Sep	
14 Oct	
4 Nov	
23 Nov	
23 Nov	



12 DAY KAMPAI GOLDEN ROUTE TOUR

Fully Escorted Tour

Sit back, relax, and let your experienced English-speaking tour guide escort you through Japan from start to finish.

Spend 12 magical days hopping through the renowned Golden Route. Through Tokyo, the gorgeous Mount Fuji, and the old capital, Kyoto. See Japan's famous snow monkeys by the hot springs, experience Hiroshima and the mystical Itsukushima Shrine on Miyajima Island, and explore countless hidden gems in between.



DEPARTURES

30 MARCH 2019

6 APRIL 2019

TOUR PRICE

From \$5,550 per person / land only / twin share base
Single supplement from \$1,780 per person

GROUP SIZE

Maximum 20 people

INCLUSIONS

Fully escorted tour by licensed English-speaking guide
11 Nights' accommodation
16 Meals (11 x Daily Breakfast, 2 x Lunch, 3 x Dinner)
Japan Rail (JR) Pass - 7 Day Ordinary (Economy Class)
All admissions during sightseeing tours
3 Luggage transfers (Tokyo - Kyoto - Kanazawa - Tokyo)

TOUR ITINERARY

DAY 1 TOKYO

Check in for 3 nights at the hotel in Tokyo. You have the rest of the day at leisure to recharge or go out into the city for your first taste of the city that never sleeps. Airport transfers not included.

Meals: –

DAY 2 TOKYO

Enjoy a sightseeing tour of Tokyo including Asakusa temple and the colourful Nakamise shopping arcade. Visit Meiji shrine, the Harajuku district where old and new cultures collide, and enjoy a welcome dinner in the evening to get acquainted with your guide and fellow tour members.

Meals: **B L D**

DAY 3 TOKYO – MOUNT FUJI – TOKYO

Take a day trip to Hakone to see the majestic Mount Fuji. Enjoy a Mount Fuji/Hakone sightseeing tour, including a ride on the Hakone Ropeway and the beautiful Lake Ashi Cruise. Enjoy the scenery of rural Japan and a breathtaking view of the sacred Mount Fuji.

Meals: B L

DAY 4 TOKYO – KYOTO

Today you will leave for Kyoto by bullet train to arrive at midday. Enjoy a tour of Arashiyama and the Sagano region by local train. Stroll through the tenryuji temple garden, then return to downtown Kyoto to visit Kyoto's famous restaurant provedores' arcade, Nishiki. You will stay at your Kyoto accommodation for 3 nights.

Meals: B

DAY 5 KYOTO

Visit Nijo Castle and the famous Golden Pavillion. In the afternoon, you will visit Kiyomizu temple, perched on a cliff-side overlooking the city. Part of the fun is the approach to the temple along the steep and busy lanes of the enchanting Higashiyama district. In the evening, enjoy a stroll through the Gion geisha district.

Meals: B

DAY 6 KYOTO – HIROSHIMA / MIYAJIMA – KYOTO

Today you will travel to Hiroshima by bullet train. The full day tour includes the Peace Park, Peace Museum and the Atomic Bomb Dome to witness Hiroshima's poignant history. You will then visit Miyajima Island, where you will see the iconic Itsukushima Shrine and its famous floating Torii gate.

Meals: B



Fushimi Inari Shrine, Kyoto

DAY 7 KYOTO – KANAZAWA

Marvel at the incredible Fushimi Inari, one of Japan's most distinctive shrines with thousands of vermilion torii gates stretching as far as the eye can see. In the afternoon, we leave for the Samurai town, Kanazawa, by train. Spend 2 nights' accommodation in Kanazawa.

Meals: B

ACCOMMODATION

TOKYO	Shinagawa Prince Hotel or similar
KYOTO	Karasuma Kyoto Hotel or similar
KANAZAWA	Hotel Kanazawa or similar
NOZAWA	Jonnobi Hotel or similar

DAY 8 KANAZAWA – TAKAYAMA – SHIRAKAWAGO

Travel back in time to the historic town of Takayama by chartered coach and enjoy a walking tour, visiting Takayama's famous morning market and the old streets of Sannomachi. Travel on to Shirakawago, a village renowned for its traditional thatched-roof houses, now listed as a world heritage site. You will then return to Kanazawa in the late afternoon.

Meals: B

DAY 9 KANAZAWA – NOZAWA

Visit the Kenrokuen Garden, the Kutaniyaki Pottery Kiln and the Higashi-Chaya District before leaving for Nozawa onsen by bullet train. Upon arrival, enjoy a 370-year-old authentic hot spring onsen with a quaint village atmosphere. 1 night's accommodation at a traditional Japanese ryokan in Nozawa village, where you will enjoy a traditional dinner.

Meals: B D



Snow Monkey Park, Nozawa

DAY 10 NOZAWA – TOKYO

Sneak a peek at the renowned Snow Monkey Park before returning back to the hustle and bustle of Tokyo by bullet train. 2 nights' accommodation in Tokyo.

Meals: B

DAY 11 TOKYO

Full day at leisure to explore all that Tokyo has to offer. Return in the evening to enjoy a farewell dinner with your fellow tour mates.

Meals: B D

DAY 12 TOKYO

Check out from your hotel, and enjoy your last day in Japan with some last-minute sightseeing or souvenir hunting. Tour concludes.

Meals: B

Tour schedule may change without prior notice.

**Reasonable walking involved. You should be able to comfortably walk at least three kilometres (3km) without stopping and climb 60 steps unaided. All Japan Tours staff is unable to provide individual personal assistance to passengers with walking, boarding or alighting coaches or other transportation.*



14 DAY COMBINATION PACKAGE TOUR

Guided Tour

A combination of guided day tours that include your accommodation and transportation. English-speaking guides will escort you for daily sightseeing and assistants will meet you at points of transfer. Perfect for more independent travellers that prefer some flexibility while travelling.

Experience Japan to the fullest!

See all that Tokyo, Kamakura, Mount Fuji, Kyoto and Hiroshima have to offer. Then set off to see world heritage site Shirakawa-go and the historical towns of Takayama and Kanazawa. A true insight into Japan's status as a land of contrasting landscapes and traditions. One-way tour, with round-trip option available. Operates all-year-round.



DEPARTURES

Operates all year round.

Blackout dates apply, please contact us for availability.

TOUR PRICE

From \$4,679 pp / land only / twin share base / one way
Single supplement from \$997 per person

INCLUSIONS

Return airport transfers and airport meet and greet
13 Nights' accommodation
5 Meals (5 x Lunches, breakfast package upon request)
Full day and half day sightseeing tours by local guides
Hotel pick-up and some drop-off services
English-speaking assistance at points of transfer
2 Luggage transfers (Tokyo - Takayama - Kyoto)

TOUR ITINERARY

DAY 1 AIRPORT – TOKYO

Meet and greet at Narita or Haneda Airport and transfer to your hotel. Check-in for 3 nights accommodation in Tokyo.

Meals: – Assistance: Airport transfer, Hotel drop-off

DAY 2 TOKYO

Today embark on a morning tour that includes a stop by the bustling Tsukiji Fish Market, Tokyo Skytree Town and a drive by the Imperial Palace and Kabuki-za Theatre. The last stop is the iconic Asakusa Sensoji Temple and the colourful Nakamise shopping street. The tour will then disembark and you have the rest of the afternoon free at leisure, enjoy!

Meals: – Assistance: Hotel pick-up

DAY 3 TOKYO – KAMAKURA – TOKYO

Leave for Kamakura by coach, where you will come face-to-face with the Great Buddha of Kamakura, have tea at Jomyo-ji temple and then visit Hokoku-ji temple. Stop by the peaceful coastal town on Enoshima Island on your way back to Tokyo.

Meals: **L** **Assistance:** Hotel pick-up

DAY 4 TOKYO – NIKKO – TOKYO

Leave for a day trip to Nikko by coach. You will visit the Nikko Toshogu Shrine, Lake Chuzenji, the majestic Kegon Falls and the Hanyu Parking area. Return to Tokyo and disembark at Shinjuku.

Meals: **L** **Assistance:** Hotel pick-up



Kegon Falls, Nikko

DAY 5 TOKYO

Today you have the day at leisure. Perhaps join a Tokyo day tour or spend the day exploring and savouring the many boroughs of Tokyo.

Meals: – **Assistance:** –

DAY 6 TOKYO – MOUNT FUJI – HAKONE

Head off to join the picturesque Mount Fuji Tour. Enjoy Mount Fuji 5th Station, a ride on the Komagatake Ropeway and the beautiful Lake Ashi Cruise. In the evening, you arrive at your hotel in Hakone.

Meals: **L** **Assistance:** Hotel pick-up

DAY 7 HAKONE – TAKAYAMA

Leave Mount Fuji to head to the small historical town of Takayama for a slice of Edo period Japan. Visit the Yatai Kaikan Hall, Kusakabe Heritage House and then the quaint streets of Kami Sanno-machi town. Stay 1 night's accommodation in Takayama.

Meals: – **Assistance:** Hotel pick-up

DAY 8 TAKAYAMA – SHIRAKAWAGO – KANAZAWA

Today, head off to the picturesque World Heritage village of Shirakawa-go, renowned for their iconic, traditional thatched-roof houses. Enjoy a cultural experience and Japanese-style lunch at the Wada Residence. Head to Kanazawa for 1 night's accommodation.

Meals: **L** **Assistance:** Hotel pick-up

DAY 9 KANAZAWA – KYOTO

Explore the Samurai District in Kanazawa before visiting an authentic former Samurai residence surrounded by calming Japanese gardens. Afterwards, enjoy the Kenrokuen Gardens and the Higashi-Chaya district. Head to Kyoto via train for 5 nights' accommodation.

Meals: – **Assistance:** Hotel pick-up



Higashi-Chaya District, Kanazawa

DAY 10 KYOTO – NARA – KYOTO

Enjoy a full day tour of Kyoto and Nara, visiting the enigmatic Nijo Castle, the Golden Pavilion and Kyoto Imperial Palace before heading to Nara to see the World Heritage Todaiji Temple, Nara Deer Park, Kasuga Shrine and Nara Nagomikan.

Meals: **L** **Assistance:** Hotel pick-up

DAY 11 KYOTO – HIROSHIMA – KYOTO

Take a day tour to Hiroshima by bullet train. The tour includes Hiroshima Peace Park, Peace Museum and Atomic Bomb Dome to experience Hiroshima's poignant history. You will then visit Miyajima Island to see the iconic Itsukushima Shrine and its famous floating Torii gate.

Meals: – **Assistance:** Hotel pick-up

DAY 12 KYOTO

Today you have the day at leisure.

Meals: – **Assistance:** –

DAY 13 KYOTO

Today you have the day at leisure.

Meals: – **Assistance:** –

DAY 14 KYOTO – AIRPORT

Check-out from hotel. Transfer to Itami Airport or Kansai International Airport.

Meals: – **Assistance:** Hotel pick-up, Airport transfer

Tour schedule may change without prior notice.

**Reasonable walking involved. You should be able to comfortably walk at least three kilometres (3km) without stopping and climb 60 steps unaided. All Japan Tours staff is unable to provide individual personal assistance to passengers with walking, boarding or alighting coaches or other transportation.*



9 DAY COMBINATION PACKAGE TOUR **A**

Guided Tour

A combination of guided day tours that include your accommodation and transportation. English-speaking guides will escort you for daily sightseeing and assistants will meet you at points of transfer. Perfect for more independent travellers that prefer some flexibility while travelling.

Hop through Japan's essential destinations (the "Golden Route") with local guides.

A combination of day tours through Tokyo, Nikko, the gorgeous Mount Fuji, and the old capital, Kyoto. Meet wild deer in Nara, experience Hiroshima and the mystical Itsukushima Shrine on Miyajima Island. Perfectly suited to first-time travellers. One-way tour, with round-trip option available. Operates all-year-round.



DEPARTURES

Operates all year round.

Blackout dates apply, please contact us for availability.

TOUR PRICE

From \$3,115 pp / land only / twin share base / one way
Single supplement from \$723 per person

INCLUSIONS

Return airport transfers and airport meet and greet
8 Nights' accommodation
4 Meals (4 x Lunches, breakfast package upon request)
Full day and half day sightseeing tours by local guides
Hotel pick-up and some drop-off services
English-speaking assistance at points of transfer
1 Luggage transfer (Tokyo - Kyoto)

TOUR ITINERARY

DAY 1 AIRPORT – TOKYO

Meet and greet at Narita or Haneda Airport and transfer to your hotel. Check-in for 3 nights accommodation in Tokyo.

Meals: – **Assistance:** Airport transfer, Hotel drop-off

DAY 2 TOKYO

Today embark on a morning tour that includes a stop by the bustling Tsukiji Fish Market, Tokyo Skytree Town and a drive by the Imperial Palace and Kabuki-za Theatre. The last stop is the iconic Asakusa Sensoji Temple and the colourful Nakamise shopping street. The tour will then disembark and you have the rest of the afternoon free at leisure, enjoy!

Meals: – **Assistance:** Hotel pick-up

DAY 3 TOKYO – NIKKO – TOKYO

Leave for Nikko by coach. You will visit the Nikko Toshogu Shrine, Lake Chuzenji, Kegon Falls and the Hanyu Parking area. Return to Tokyo and disembark at Shinjuku.

Meals: **L** **Assistance:** Hotel pick-up

DAY 4 TOKYO – MOUNT FUJI – HAKONE

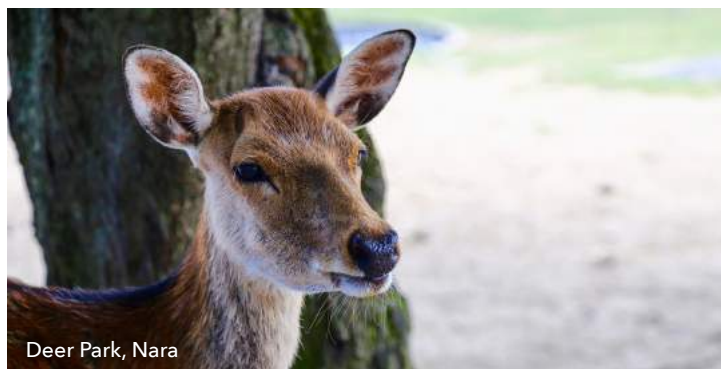
Head off to join the picturesque Mount Fuji Tour. Enjoy Mount Fuji 5th Station, a ride on the Komagatake Ropeway and the beautiful Lake Ashi Cruise. In the evening, you arrive at your hotel in Hakone.

Meals: **L** **Assistance:** Hotel pick-up

DAY 5 HAKONE – NARA – KYOTO

Leave Mount Fuji behind and head to Nara by bullet train. Tour includes the World Heritage Todaiji Temple, Nara Deer Park, Kasuga Shrine and Nara Nagomikan. Head to Kyoto for 4 nights' accommodation.

Meals: **L** **Assistance:** Hotel pick-up and drop-off



Deer Park, Nara

DAY 6 KYOTO

Full day Kyoto sightseeing with lunch. This tour includes the enigmatic Nijo Castle, the Golden Pavillion, Kyoto Imperial Palace, Heian Shrine, Sanjusangendo and a panoramic view over all of Kyoto at Kiyomizu Temple.

Meals: **L** **Assistance:** Hotel pick-up and drop-off

DAY 7 KYOTO – HIROSHIMA – KYOTO

Take a day tour to Hiroshima by bullet train. The tour includes Hiroshima Peace Park, Hiroshima Peace Museum and the Atomic Bomb Dome to experience Hiroshima's poignant history. You will then visit Miyajima Island by ferry to see the iconic Itsukushima Shrine and its famous floating Torii gate.

Meals: – **Assistance:** Hotel pick-up



Golden Pavilion, Kyoto

DAY 8 KYOTO

Today you have the day at leisure.

Meals: – **Assistance:** –

DAY 9 KYOTO – AIRPORT

Check-out from hotel. Transfer to Itami Airport or Kansai International Airport.

Meals: – **Assistance:** Hotel pick-up, Airport transfer

Tour schedule may change without prior notice.

**Reasonable walking involved. You should be able to comfortably walk at least three kilometres (3km) without stopping and climb 60 steps unaided. All Japan Tours staff is unable to provide individual personal assistance to passengers with walking, boarding or alighting coaches or other transportation.*

Itsukushima Shrine, Miyajima Island





9 DAY COMBINATION PACKAGE TOUR B

Guided Tour

A combination of guided day tours that include your accommodation and transportation. English-speaking guides will escort you for daily sightseeing and assistants will meet you at points of transfer. Perfect for more independent travellers that prefer some flexibility while travelling.

For something a little bit different.

Visit Tokyo, sleepy Kamakura and Mount Fuji before seeing world heritage site Shirakawa-go with its uniquely Japanese thatch-roofed houses. Travel back in time with a stroll through Takayama village and the historical samurai city of Kanazawa before heading to old-capital Kyoto. One-way tour, with round-trip option available. Operates all-year-round.

DEPARTURES

Operates all year round.

Blackout dates apply, please contact us for availability.

TOUR PRICE

From \$3,313 pp / land only / twin share base / one way
Single supplement from \$727 per person

INCLUSIONS

Return airport transfers and airport meet and greet
8 Nights' accommodation
4 Meals (4 x Lunches, breakfast package upon request)
Full day and half day sightseeing tours by local guides
Hotel pick-up and some drop-off services
English-speaking assistance at points of transfer
2 Luggage transfers (Tokyo - Takayama - Kyoto)

TOUR ITINERARY

DAY 1 AIRPORT – TOKYO

Meet and greet at Narita or Haneda Airport and transfer to your hotel. Check-in for 3 nights accommodation in Tokyo.

Meals: – Assistance: Airport transfer, Hotel drop-off

DAY 2 TOKYO

Today embark on a morning tour that includes a stop by the bustling Tsukiji Fish Market, Tokyo Skytree Town and a drive by the Imperial Palace and Kabuki-za Theatre. The last stop is the iconic Asakusa Sensoji Temple and the colourful Nakamise shopping street. The tour will then disembark and you have the rest of the afternoon free at leisure, enjoy!

Meals: – Assistance: Hotel pick-up



DAY 3 TOKYO – KAMAKURA – TOKYO

Leave for Kamakura by coach, where you will come face-to-face with the Great Buddha of Kamakura, have tea at Jomyo-ji temple and then visit Hokoku-ji temple. Stop by the peaceful coastal town on Enoshima Island on your way back to Tokyo.

Meals: L **Assistance:** Hotel pick-up



Great Buddha, Kamakura

DAY 4 TOKYO – MOUNT FUJI – HAKONE

Head off to join the picturesque Mount Fuji Tour. Enjoy Mount Fuji 5th Station, a ride on the Komagatake Ropeway and the beautiful Lake Ashi Cruise. In the evening, you arrive at your hotel in Hakone.

Meals: L **Assistance:** Hotel pick-up

DAY 5 HAKONE – TAKAYAMA

Leave Mount Fuji to head to the small historical town of Takayama for a slice of Edo period Japan. Visit the Yatai Kaikan Hall, Kusakabe Heritage House and stay 1 night's accommodation in Takayama.

Meals: – **Assistance:** Hotel pick-up

DAY 6 TAKAYAMA – SHIRAKAWAGO – KANAZAWA

Today, head off to the picturesque World Heritage village of Shirakawa-go. Enjoy a cultural experience and Japanese-style lunch at the Wada Residence. Head to Kanazawa for 1 night's accommodation.

Meals: L **Assistance:** Hotel pick-up

DAY 7 KANAZAWA – KYOTO

Explore the Samurai District in Kanazawa before visiting an authentic former Samurai residence surrounded by calming Japanese gardens. Afterwards, enjoy the Kenrokuen Gardens and the Higashi-Chaya district. Head to Kyoto via train for 2 nights' accommodation.

Meals: – **Assistance:** Hotel pick-up



Kusakabe Heritage House, Takayama

DAY 8 KYOTO

Full day Kyoto sightseeing with lunch. This tour includes the enigmatic Nijo Castle, the Golden Pavillion, Kyoto Imperial Palace, Heian Shrine, Sanjusangendo and a panoramic view over all of Kyoto at Kiyomizu Temple.

Meals: L **Assistance:** Hotel pick-up and drop-off

DAY 9 KYOTO – AIRPORT

Check-out from hotel. Transfer to Itami Airport or Kansai International Airport.


Meals: – **Assistance:** Hotel pick-up, Airport transfer

Tour schedule may change without prior notice.

**Reasonable walking involved. You should be able to comfortably walk at least three kilometres (3km) without stopping and climb 60 steps unaided. All Japan Tours staff is unable to provide individual personal assistance to passengers with walking, boarding or alighting coaches or other transportation.*

Shirakawa-go Village





Take a short detour through Japan's most popular destinations. Tour through Tokyo, majestic Mount Fuji, then Kyoto and Nara. One-way tour. Round trip course and reverse itinerary available.

6 DAY COMBINATION PACKAGE TOUR

Guided Tour

A combination of guided day tours that include your accommodation and transportation. English-speaking guides will escort you for daily sightseeing and assistants will meet you at points of transfer. Perfect for more independent travellers that prefer some flexibility while travelling.



DEPARTURES

Operates all year round.

Blackout dates apply, please contact us for availability.

TOUR PRICE

From \$1,771 pp / land only / twin share base / one way

Single supplement from \$479 per person

INCLUSIONS

Return airport transfers and airport meet and greet
5 Nights' accommodation

2 Meals (2 x Lunches, breakfast package upon request)

Full day and half day sightseeing tours by local guides

Hotel pick-up and some drop-off services

English-speaking assistance at points of transfer

1 Luggage transfer (Tokyo - Kyoto)

TOUR ITINERARY

DAY 1 AIRPORT – TOKYO

Meet and greet at Narita or Haneda Airport and transfer to your hotel. Check-in for 2 nights' accommodation in Tokyo.

Meals: – Assistance: Airport transfer, Hotel drop-off

DAY 2 TOKYO

Today embark on a morning tour that includes the bustling Tsukiji Fish Market and Tokyo Skytree Town, then visit the Asakusa Sensoji Temple and the colourful Nakamise shopping street. The tour will then disembark and you have the rest of the afternoon free, enjoy!

Meals: – Assistance: Hotel pick-up

DAY 3 TOKYO – MOUNT FUJI – KYOTO

Head off to join the picturesque Mount Fuji Tour. Enjoy Mount Fuji 5th Station, a ride on the Komagatake Ropeway and the beautiful Lake Ashi Cruise. In the evening, arrive into Kyoto for 3 nights' accommodation.

Meals: L Assistance: Hotel pick-up

DAY 4 KYOTO – NARA – KYOTO

Enjoy a full day tour of Kyoto and Nara, including the enigmatic Nijo Castle, the Golden Pavillion and the Kyoto Imperial Palace before heading to Nara to see the World Heritage Todaiji Temple, Nara Deer Park, Kasuga Shrine and Nara Nagomikan.

Meals: L Assistance: Hotel pick-up and drop-off

DAY 5 KYOTO

Today you have the day at leisure.

Meals: – Assistance: –

DAY 6 KYOTO – AIRPORT

Check-out from hotel. Transfer to Itami Airport or Kansai International Airport.

Meals: – Assistance: Hotel pick-up, Airport transfer

Tour schedule may change without prior notice.

**Reasonable walking involved. See page 13 for details.*

A short getaway in time into the historical towns of Takayama, the World Heritage listed Shirakawa-go village and arts-and-cultural capital Kanazawa for a whimsical taste of the Samurai legacy.

4 DAY TAKAYAMA HOLIDAY TOUR

Guided Tour

A combination of guided day tours that include your accommodation and transportation. English-speaking guides will escort you for daily sightseeing and assistants will meet you at points of transfer. Perfect for more independent travellers that prefer some flexibility while travelling.



DEPARTURES

Operates all year round.

Blackout dates apply, please contact us for availability.

TOUR PRICE

From \$1,881 pp / land only / twin share base / one way

Single supplement from \$179 per person

INCLUSIONS

3 Nights' accommodation

2 Meals (2 x Lunches, breakfast package upon request)

Full day and half day sightseeing tours by local guides

Hotel pick-up and some drop-off services

English-speaking assistance at points of transfer

2 Luggage transfers (Tokyo - Takayama - Kyoto)

TOUR ITINERARY

DAY 1 TOKYO – MOUNT FUJI – KYOTO

Head off to join the picturesque Mount Fuji Tour. Enjoy Mount Fuji 5th Station, a ride on the Komagatake Ropeway and the beautiful Lake Ashi Cruise. In the evening, you will arrive at your hotel in Hakone.

Meals: L Assistance: Hotel pick-up

DAY 2 HAKONE – TAKAYAMA

Leave Mount Fuji to head to the small historical town of Takayama for a slice of Edo period Japan. Visit the Yatai Kaikan Hall, Kusakabe Heritage House and stay 1 night's accommodation in Takayama.

Meals: – Assistance: Hotel pick-up

DAY 3 TAKAYAMA – SHIRAKAWAGO – KANAZAWA

Today, head off to the picturesque World Heritage village of Shirakawa-go. Enjoy a cultural experience and Japanese-style lunch at the Wada Residence. Head to Kanazawa for 1 night's accommodation.

Meals: L Assistance: Hotel pick-up

DAY 4 KANAZAWA – KYOTO

Explore the Samurai District in Kanazawa before visiting an authentic former Samurai residence surrounded by calming Japanese gardens. Afterwards, enjoy the Kenrokuen Gardens and the Higashi-Chaya district. Head to Kyoto via train. Tour terminates at Kyoto Station.

Meals: – Assistance: Hotel pick-up

Tour schedule may change without prior notice.

**Reasonable walking involved. You should be able to comfortably walk at least three kilometres (3km) without stopping and climb 60 steps unaided. All Japan Tours staff is unable to provide individual personal assistance to passengers with walking, boarding or alighting coaches or other transportation.*

DAY TOURS

FROM TOKYO, KYOTO, OSAKA, HIROSHIMA AND OKINAWA

Fancy a short out-of-town getaway, a street food experience or dinner with a geisha? Fit an activity, a day tour or an overnight plan into your own trip. Recommended for independent travellers who want to experience something a little unique without the fuss of organising it yourself.

TOKYO DAY TOURS

MOUNT FUJI & HAKONE TOUR

Tour Price: From \$233 per person

Duration: Full-day

Operates: 1 Jan - 31 Dec: Daily*

Picturesque Mt. Fuji and Hakone Tour with lunch included. Tour includes Mt. Fuji 5th Station, Lake Ashi Cruise and the Komagatake Ropeway. Overnight plans available.

DYNAMIC TOKYO TOUR

Tour Price: From \$165 per person

Duration: Full-day

Operates: 1 Jan - 31 Dec: Daily*

Tokyo sightseeing tour with lunch included. Tour includes Tokyo Tower, tea ceremony, Japanese-style lunch, Imperial Palace Plaza, Sumida River Cruise and Asakusa Sensoji Temple.

NIKKO WORLD HERITAGE TOUR

Tour Price: From \$206 per person

Duration: Full-day

Operates: 2 Jan - 21 Dec: Tue, Wed, Fri, Sun*

Full day Nikko sightseeing with Japanese-style lunch, including the World Heritage Toshogu Shrine, Lake Chuzenji and Kegon Falls.

SUMO TOURNAMENT EXPERIENCE

Tour Price: From \$213 per person

Duration: Half-day

Operates: 14 - 28 Jan: Daily
13 - 27 May: Daily
9 - 23 Sep: Daily*

Watch a live Sumo tournament! With the option to add a Sukiyaki dinner, a Yakatabune dinner cruise, a Yakiniku dinner or some downtown Tokyo sightseeing.

SUSHI MAKING WORKSHOP

Tour Price: From \$192 per person

Duration: Half-day

Operates: 4 Jan - 28 Dec: Mon, Thu, Fri*

Explore the hustle and bustle of the Tsukiji Fish Markets, then participate in a sushi-making workshop with a professional chef. Enjoy your creation for lunch!

SNOW MONKEY PARK TOUR

Tour Price: From \$383 per person

Duration: Full-day

Operates: 2 Jan - 30 March: Mon, Wed, Fri*

A day trip to the Jigokudani Monkey Park to see wild macaques (snow monkeys) up close in their habitat. In the colder months, you may be lucky enough to see tribes of them relaxing in the natural hot springs.

Cruise on Lake Ashi on the Mount Fuji & Hakone Tour



KYOTO DAY TOURS

KYOTO 1 DAY TOUR

Tour Price: From \$185 per person

Duration: Full-day

Operates:

5 Jan - 30 Dec: Daily*

Explores Japan's former capital including the popular Nijo Castle, the Golden Pavilion, Kyoto Imperial Palace, Heian Shrine and Sanjusangendo Hall. Lastly, visit the Kiyomizudera Temple for a spectacular panoramic view over Kyoto.

GEISHA DINNER EXPERIENCE

Tour Price: From \$192 per person

Duration: Evening

Operates:

28 Mar - 30 May: Mon, Wed, Fri

1 Jun - 28 Sep: Wed, Fri

1 Oct - 9 Nov: Mon, Wed, Fri*

Spend the evening enjoying a traditional Japanese dinner while watching a private performance by a Maiko, an apprentice Geisha.

KYOTO & NARA 1 DAY TOUR

Tour Price: From \$206 per person

Duration: Full-day

Operates:

5 Jan - 10 Mar: Tue, Thu, Sat

13 Mar - 30 Dec: Daily*

Hit two birds with one stone! Visits the Nijo Castle, Golden Pavilion and Kyoto Imperial Palace before moving onto ancient icon Nara's World Heritage Todaiji Temple, neighbouring Deer Park and Kasuga Taisha Shrine.

SAGANO BAMBOO & ARASHIYAMA WALKING TOUR

Tour Price: From \$196 per person

Duration: Half-day

Operates:

6 Jan - 28 Feb: Wed, Sat

3 Mar - 29 Dec: Mon, Wed, Sat*

Join a walking tour through the scenic and mystical Arashiyama and Sagano Bamboo Grove forest, where you will then enjoy lunch on a Yakatabune boat cruise down the river.

KYOTO NIGHT TOUR

Tour Price: From \$169 per person

Duration: Half-day

Operates:

17 Mar - 29 Nov: Tue, Thu, Sat

1 - 22 Dec: Sat*

Begin the evening watching traditional dancing, music and performances at Gion Corner, then participate in a private tea ceremony followed by a special traditional dinner.

GION KIMONO FITTING EXPERIENCE

Tour Price: From \$188 per person

Duration: Half-day

Operates:

4 Jan - 27 Dec: Tue, Thu, Sat*

Get fitted into an authentic kimono, or yukata in the summer, and walk the streets of the traditional Gion district for a rare and unique photo opportunity. Fitting assistance and hair styling also included.

*Blackout dates apply, please contact us for current availabilities.

USEFUL JAPANESE PHRASES

Excuse me. **Sumimasen.**

Do you speak English? **Eigo ga hanasemasuka?**

I don't understand. **Wakarimasen.**

Can you please say that one more time? **Mo ichido itte kudasai.**

Do you have an English menu?

Eigo no 'menyu' (menu) ga arimasuka?

How much? **Ikura desuka?**

Where is the toilet? **Toire wa doko desuka?**

Where is the train station? **Eki wa doko desuka?**

I want to go to (place name). **(Place name) ni ikitai desu.**

Asking For Help

Have no fear! The Japanese are renowned for their hospitality and willingness to help. If you ever feel a little bit lost, don't be afraid to ask for help from a passerby. Spoken English can be a little bit tricky, so showing them a written address or the name of where you need to get to may be the best way to go.

HIROSHIMA DAY TOUR

Departures available from Hiroshima, Kyoto and Osaka.

Tour Price: From \$201 per person

Duration: Full-day

Operates: Jan & Feb: Mon, Wed, Sat
Mar, May – Sep, Nov & Dec: Mon, Wed, Fri, Sat
Apr & Oct: Daily except Thursdays

Visit Miyajima Island and the famous Itsukushima Shrine, with its red torii gate which appears to float over the water at high tide. Afterwards, head back to the city and wander through the Hiroshima Peace Memorial Park and Museum and learn about its poignant history.



Hiroshima Peace Memorial Park

OSAKA DAY TOURS

OSAKA 1 DAY WALKING TOUR

Tour Price: From \$182 per person

Duration: Full-day

Operates: 7 Jan – 25 Dec: Tue, Thu, Sat, Sun*

Take in the stunning views of Osaka from the Aerial Garden Observatory. After lunch, visit Osaka Castle, built in 1583, then to the river boat dock and take an Aqua Liner cruise around Nakanoshima.

DOWNTOWN OSAKA LOCAL FOOD TOUR

Tour Price: From \$106 per person

Duration: Half-day

Operates: 5 Jan – 29 Dec: Mon, Wed, Fri, Sat*

Explore the Sumiyoshi Grand Shrine, take a ride on a downtown Osaka's tramcar, and sample some of Osaka's soul food, "kushikatsu" (deep-fried meat or veggies on skewers).

HIMEJI CASTLE & AKASHI KAIKYO BRIDGE TOUR

Tour Price: From \$222 per person

Duration: Full-day

Operates: 2 Mar – 28 Dec: Mon, Wed, Fri*

Take a tour of World Heritage listed Himeji Castle and then head off to experience the Akashi Kaikyo Bridge, the longest suspension bridge in the world, along its promenade.

OKINAWA DAY TOURS

KERAMA ISLANDS 1 DAY SNORKELLING & DIVING TOUR

Tour Price: From \$123 per person

Duration: Full-day

Operates: 1 Apr – 31 Dec: Daily*

*Diving not available on Saturdays

Take a snorkelling and introductory diving tour around the magnificent natural beauty of the Kerama Shoto National Park coral reef, known for some of the most beautiful waters in Okinawa.

PARASAILING IN OKINAWA

Tour Price: From \$96 per person

Duration: Morning

Operates: 1 Jan – 31 Dec: Daily*

Fly 40-50 meters up in the air while being towed by a motorboat! A thrilling and adventurous experience among the spectacular blues of the skies and surrounding oceans.

BLUE CAVERN 1 DAY SNORKELLING & DIVING TOUR

Tour Price: From \$69 per person

Duration: Morning

Operates: 1 Apr – 31 Dec: Daily*

Set sail for the Blue Cavern of Okinawa, where you can participate in an underwater fish feeding experience, snorkel and participate in an introductory dive with a small group.

*Blackout dates apply, please contact us for availability.



ATMs

You can withdraw cash using your international credit card, debit and prepaid cards nationwide at the Japan Post Bank Office ATMs, and at Seven Bank ATMs located in most 7-Eleven convenience stores. Please note that no other Japanese banks currently accept international transactions.

Credit Cards

International credit cards such as American Express, VISA and MasterCard are acceptable at major establishments. However, credit card transactions are not always convenient outside big cities so obtaining cash beforehand is recommended when you travel to the countryside.

Trains

The railway system in Japan has a reputation for punctuality and safety. Tickets for short distances are available from ticket machines that are installed at each train station whereas tickets for long distances and reservations are dealt with at ticket offices at major stations.

Prepaid Transport Cards

‘Suica’ or ‘Pasma’ cards are prepaid transport cards and are an excellent way to get around the city without the hassle of buying individual tickets. They can be used on local trains and buses nationwide, are available for purchase at the airport and major train stations and can be topped up at designated machines in every station.

Buses and Coaches

An inexpensive but lesser-known mode of intercity transportation is to take a coach. Intercity coach routes are extensive, and the coaches themselves are clean, comfortable, and can cost less than half of what you’d pay for a bullet train.

Luggage Delivery

If you plan to take a lot of luggage with you, to ease your load it is possible to send your large suitcases ahead to meet you at your next hotel or any residential address across the country. Fees begin from around AUD \$25 per large suitcase under 25kg and can be done at your hotel concierge, at convenience stores or at the airport.

Public Transport Etiquette

In the interest of courtesy towards other passengers, please avoid speaking loudly, whether with friends or on the phone, on public transport at such as buses and trains.

Wi-fi and Internet Access

Public wi-fi networks can be found around major airports, train stations, and tourist information centres, though registration is required to use most of these services. Alternatively, rental pocket wi-fi services are available online to be sent to your hotel or residential address, or can be purchased upon your arrival at Narita, Haneda or Kansai International Airports.

Electricity

Japan electricity operates on 100 volts, whereas Australia and Central Europe operates on 220 volts. Dual type electrical appliances (such as hairdryers, travel irons and shavers) will therefore be handy. The power outlets are a 2-pin-flat blade plugs, similar to the US, so if you plan to take electronic appliances it is advisable to carry an adaptor with you. Transformers and plugs for three pins to convert your electrical connections are available at some hotels.

Travelling with Dietary Requirements

Food allergies are not common in Japan, therefore obtaining special meals or making special requests can be difficult. But don’t worry! You can still have a great time travelling in Japan; it is best to do some preparation beforehand if you feel that there will be some foods that you won’t be able to consume on your trip.

Vegetarian/Vegan Diet: Vegetarian options are becoming increasingly common due to the rising influx of tourism, but you might still need to do some research. Restaurants in tourist areas that have English menus often offer vegetarian options. Generally, please be aware that your options may be limited, as many dishes without meat are made using Dashi (fish stock).

Gluten-Free Diet: Following a gluten-free diet in Japan can be difficult as soy sauce (which contains gluten) is widely used as an ingredient in Japanese cuisine. We recommend that you pack some gluten-free snacks in your suitcase – you never know when you may need them.

Smoking

Although it has now become illegal to smoke on the street in many places in Japan, many bars, cafes and restaurants still allow smoking indoors in designated smoking areas. Some may not utilise proper segmentation or ventilation. It is perfectly okay to tell the service person that you would like to be placed far away from the smoking area.

For more Japan travel tips, visit www.alljapantours.com.au/japan-travel-tips and equip yourself for a unique cultural experience.

BOOKING CONDITIONS

Reservation and payment

A non-refundable deposit of \$220 per person is payable within 7 days of confirmation. The balance is payable 60 days prior to departure unless otherwise specified.

Cancellation

1. Cancellation after confirmation incurs retainment of your non-refundable deposit of \$220 per person.
 - Sixty days or more prior to departure: All balance paid will be returned to you but we retain your deposit of \$220 per person.
 - Between 31 and 59 days prior to departure: We retain 50% of the total booking cost.
 - 30 days or less prior to departure: We retain 100% of the total booking cost.
2. Cancellation after air ticket is issued incurs a further charge of \$220 per person plus any charges required by the airlines' fare regulations.
3. No refunds can be made on the departure date or after travel, as arranged by All Japan Tours, commences.
4. No refunds are available if a client starts or ends a tour earlier than advertised.

Amendments

Each amendment to the booking requested after the initial reservation is made will incur a fee of \$30 per booking per amendment.

Late Booking Fee

For bookings made within 7 days of departure, a fee of \$100 will be charged, and full payment is required at the time of booking.

Insurance

You must insure yourself against loss resulting from cancellation and the normal travel risks. We strongly recommend that comprehensive travel insurance is purchased at the time of booking.

Single Travellers

For single travellers, a single supplement will apply. In the interest of traveller privacy, All Japan Tours does not find rooming companions for single travellers.

Documentation

Australian passport holders do not require a visa for holiday stays in Japan up to 90 days. All Japan Tours does not accept any responsibility for losses or additional expenses incurred as a result of a passenger not holding the necessary valid passport or visa.

Changes in Prices

Prices are expressed in Australian dollars based on foreign exchange rates and are subject to alteration should there be any fluctuation in the rate of exchange. All Japan Tours prices may be altered with or without notice at any time.

Responsibility

All Japan Tours advises that the service it provides is for the booking and packaging of goods and services provided by other operators, such as hotels and transportation companies. Passengers are advised to familiarise themselves with the terms and conditions on which these services are supplied. Accordingly All Japan Tours will not be responsible and will be excluded from liability for any loss, damage, injury, delay or inconvenience, omission or acts being negligent or otherwise, committed by the operators or airlines, coach lines, hotel or attractions used in connection with the tours. All such losses or expenses will have to be borne by the passenger.

Possible Changes

All Japan Tours reserves the right to change or cancel the itinerary if necessary.





All Japan Tours

Level 13, Citigroup
2 Park Street, Sydney NSW 2000

Phone: 02 9004 7846

Fax: 02 9004 7054

contact@alljapantours.com.au

www.alljapantours.com.au

